

PL0976-000

TUSCAN GARDENS OF DELRAY BEACH

BEING A PORTION OF SECTION 14, TOWNSHIP 46 SOUTH, RANGE 42 EAST, PALM BEACH COUNTY, FLORIDA

N88°42'49"E 2666.88'(GRID) 2666.79'(GROUND) P.O.C.
NORTHWEST CORNER SECTION 14-46-42
N 777120.132
E 937901.092
PALM BEACH COUNTY POSITION, FOUND PALM BEACH COUNTY MONUMENT AND BRASS DISK
NORTH EAST CORNER OF THE NORTHWEST 1/4 SECTION 14-46-42 (NOT RECOVERED)
N 777180.003
E 940567.295
(PALM BEACH COUNTY POSITION)

THIS INSTRUMENT PREPARED BY
DAVID P. LINDLEY
OF
CAULFIELD and WHEELER, INC.
SURVEYORS - ENGINEERS - PLANNERS
7900 GLADES ROAD, SUITE 100
BOCA RATON, FLORIDA 33434 - (561)392-1991
CERTIFICATE OF AUTHORIZATION NO. LB3591

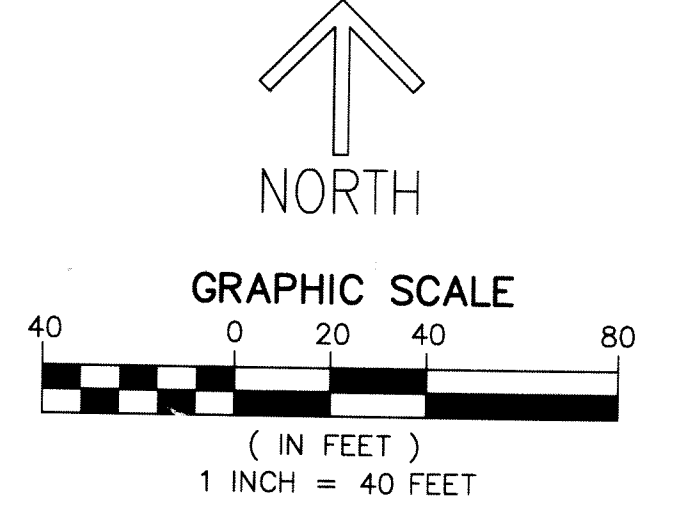
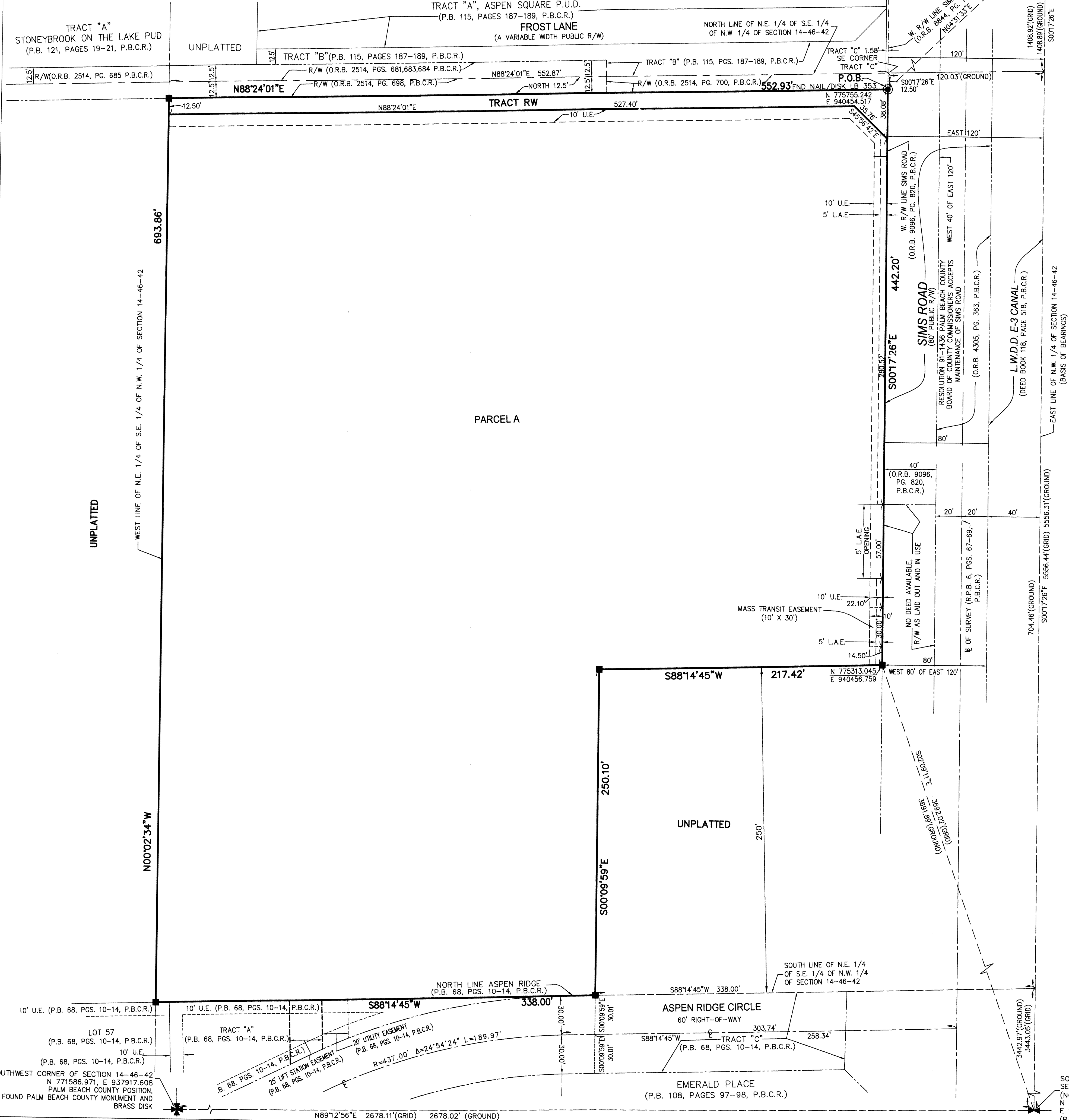
163

STATE OF FLORIDA
COUNTY OF PALM BEACH
THIS PLAT WAS FILED FOR
RECORD AT _____ M.
THIS _____ DAY OF _____
A.D. 20____ AND DULY RECORDED
IN PLAT BOOK _____ ON
PAGES _____ AND _____

SHARON R. BOCK
CLERK AND COMPTROLLER

BY: _____
DEPUTY CLERK

SHEET 2 OF 2



NOTES
COORDINATES, BEARINGS AND DISTANCES
COORDINATES SHOWN ARE GRID
DATUM = NAD 83 (90/98 ADJUSTMENT)
ZONE = FLORIDA EAST
LINEAR UNIT = US SURVEY FEET
COORDINATE SYSTEM 1983 STATE PLANE
TRANSVERSE MERCATOR PROJECTION
ALL DISTANCES ARE GROUND UNLESS NOTED OTHERWISE
SCALE FACTOR = 1.0000339
GROUND DISTANCE X SCALE FACTOR = GRID DISTANCE
BEARINGS AS SHOWN HEREON ARE GRID DATUM,
NAD 83 (90/98 ADJUSTMENT), FLORIDA EAST ZONE.

LEGEND/ABBREVIATIONS
B - BASELINE
C - CENTERLINE
Δ - DELTA (CENTRAL ANGLE)
C.M. - CONCRETE MONUMENT
DE - DRAINAGE EASEMENT
E - EASTING
L - ARC LENGTH
L.A.E. - LIMITED ACCESS EASEMENT
LB - LICENSED BUSINESS
L.W.D.D. - LAKE WORTH DRAINAGE DISTRICT
N - NORTHING
N/D - NAIL & DISK
O.R.B. - OFFICIAL RECORD BOOK
P.O.B. - POINT OF BEGINNING
P.O.C. - POINT OF COMMENCEMENT
P.B. - PLAT BOOK
P.B.C. - PALM BEACH COUNTY
P.B.C.R. - PALM BEACH COUNTY RECORDS
PG(S) - PAGES
R - RADIUS
R/W - RIGHT-OF-WAY
R.P.B. - ROAD PLAT BOOK
U.E. - UTILITY EASEMENT
■ PRM - DENOTES PERMANENT REFERENCE MONUMENT
4" x 4" x 24" CONCRETE MONUMENT WITH ALUMINUM DISK STAMPED "C&W PRM LB3591"